

PORCELAIN BENEFITS



COLOR WILL NOT FADE



LONG-LASTING AND ANTI-FROST



RESISTANT TO TEMPERATURE CHANGES



RESISTANT TO ACIDS, CHEMICAL PRODUCTS, SALT



MILDEW AND MOSS RESISTANT



NON-ABSORBENT AND EASY TO CLEAN



ANTISLIP R11 OR R12



RESISTANT TO HEAVY LOADS



EASY AND QUICK TO INSTALL





IPC

INTERNATIONAL
PORCELAIN
COMPANY

Beautiful Outdoor Porcelain Pavers

1182 Fischer Blvd., Suite 4 ■ Toms River, NJ 08753 ■ Ph: (732) 503-4920

PORCELAIN BENEFITS

Porcelain Pavers are perfect for patios, gardens, pool decks, outdoor areas and DRIVEWAYS.

- Anti-slip
- Maintenance Free (No Sealing Required)
- Color will not change over time (Fade Resistant)
- Resistant to Freeze Thaw (0.05% Absorption)
- Resistant to mold, mildew and moss
- Stain Resistant, easy to clean
- 10° cooler than concrete
- Resistant to Heavy Loads
- Built to Last



What's Inside

PORCELAIN BENEFITS

2 PROJECT PLANNING

4 2CM PORCELAIN PAVERS

14 3CM PORCELAIN PAVERS

24 5CM PORCELAIN PAVERS

26 PORCELAIN COBBLESTONE

27 PORCELAIN STEPPING STONE

28 PRODUCT LIST

30 ACCESSORIES

31 BUDGET / CARE & MAINTENANCE

32 GUARANTEE

OUTDOOR DESIGN BASICS

Project Planning Outdoor

If you are a new homeowner, renovating, or building a new house, there are many aspects of any outdoor living project to consider when starting a new project. Whether you love looking at home design magazines or watching home renovation shows, it can get you thinking about what you want in your home's curb appeal or backyard oasis.

With International Porcelain Company, we want to offer our customers not only high-quality and beautifully designed porcelain pavers, but we also want to educate you on what important things to consider when starting a driveway renovation, patio, outdoor kitchen or pool deck.

— HOW TO CHOOSE PAVER —

1 DO YOUR RESEARCH.

Cut pictures from interior design magazines or search the internet for matching color palettes and designs that you love.

2 CHOOSING A COLOR PALETTE.

Choose one main color and up to 2 accent colors for your design. The main color should be a neutral color like beige, white, silver, black, or grey. Great and timeless accent colors are gold, turquoise, red, blue, or oranges. Keep in mind your pool tile should be a complimenting color to your porcelain paver color.

3 MATCH YOUR PAVER TO THE MAIN COLOR PALETTE.

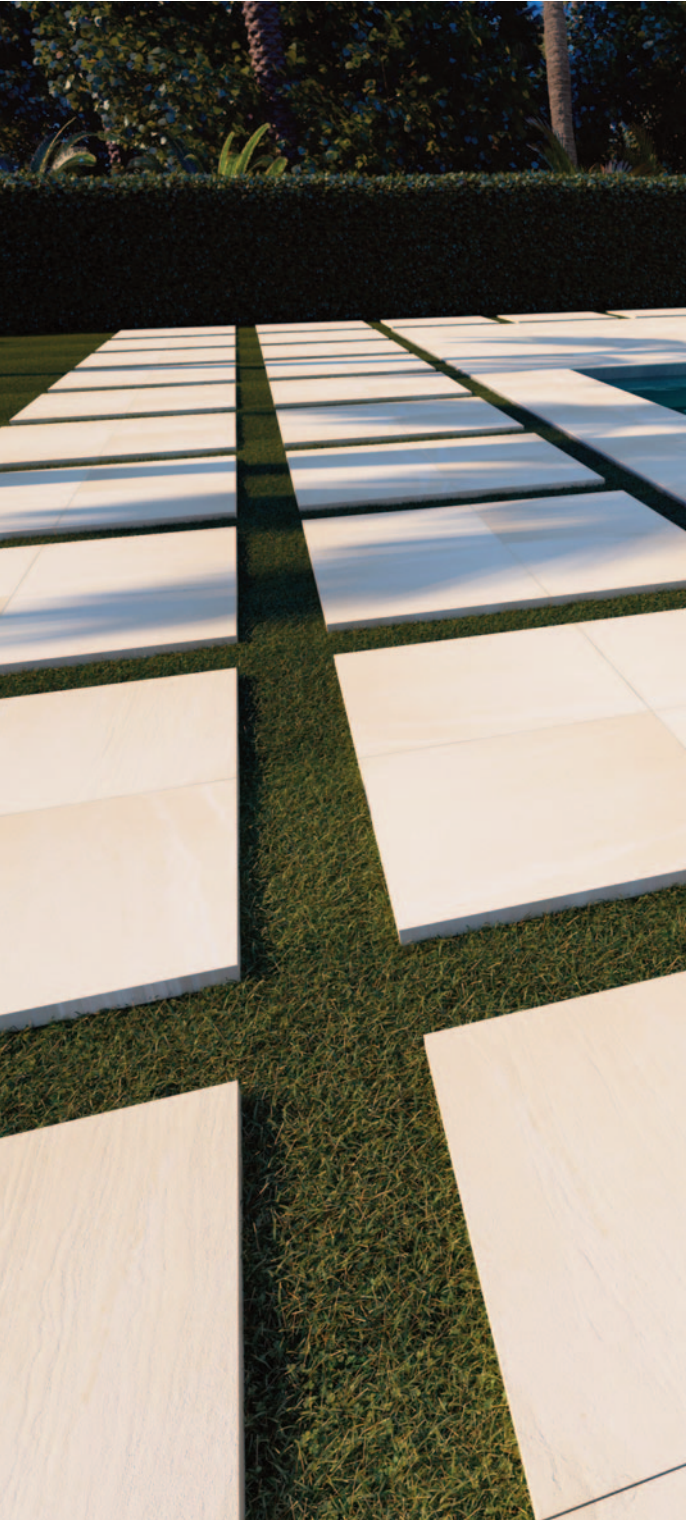
If you are going with beige as your main color, take a look at our 2cm Shellstone or Sandstone. For grey tones check our Quartz Griss, Sandstone Grey, or Silver Travertine. If you want your paver design to pop, try the DaVinci design in 2cm or 3cm.



OUTDOOR DESIGN BASICS

Project Planning Outdoor

— HOW TO CHOOSE SHAPES & PATTERNS —



1 CHOOSING A PATTERN.

The most common is the straight lay pattern, which will create an overall grid pattern. The running brick pattern is a pattern consistently used on walkways that creates an offset design for each row. The herringbone pattern is booming back into popularity and mostly seen on home design shows. This beautiful design features 45-degree angles with a "v" shape.

2 MAKE A UNIQUE DESIGN.

Some of our porcelain pavers come in multiple sizes allowing for unique design opportunities. With some Porcelain Pavers available in both 24"x24" and 16"x32", if you have a talented install team, you may be able to create a unique look.

3 PLANK VS. SQUARE PORCELAIN PAVERS.

We offer plank porcelain pavers that are a favorite among commercial contractors and builders. Our Cadore Rovere and Cadore Frassino plank porcelain pavers come in 8"x32" size, resembling wood planks. These are great for a rustic or Italian villa design. Square porcelain pavers are more traditional and transcend time in 24"x24" and 12"x12" sizes.

4 THINK ABOUT YOUR OUTDOOR SPACE.

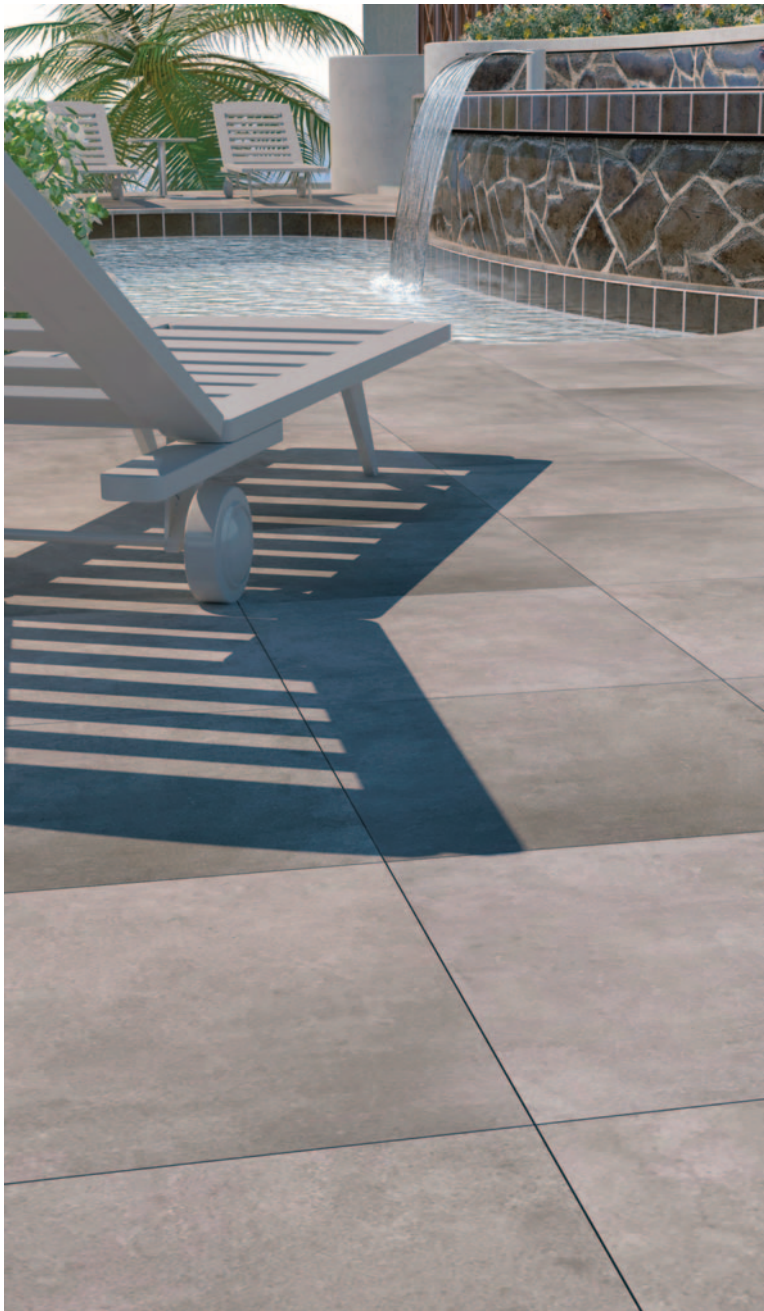
When choosing a shape and pattern, think about the space you are designing. If you need to elongate your surface area it could be good to go with a longer rectangle or plank shaped porcelain paver then a traditional square shape.

2CM PORCELAIN PAVERS

International Porcelain Company offers the creamy, warm color of a **2CM Shellstone** porcelain pavers. They are perfect for patios, pools, steps and walkways. The beautiful shellstone color is a neutral tone for a warm touch. The Shellstone outdoor porcelain paver is non slip with no maintenance required, which is why they are great for pool decks, and patio applications. In the decorating and interior design sector, cream colors, such as Shellstone, are great for use with any color scheme and evokes a clean and calm feeling due to its simple pallet. The Shellstone porcelain paver was crafted to match this need with a calm creamy base and flicks of gold, beige, yellow and khaki.

DIMENSION:
24" x 24" x 3/4"
SqFt/PLT: 288
Lb/PLT: 2750





LEFT PAGE

2CM Shellstone porcelain paver

Dimensions: 24" x 24"

TOP CENTER

2CM Roma Travertine porcelain paver is a great alternative to the natural travertine as it will always maintain color consistency with zero maintenance. The Roma Travertine is great for installation around pool decks and patios.

Dimensions: 24" x 24"

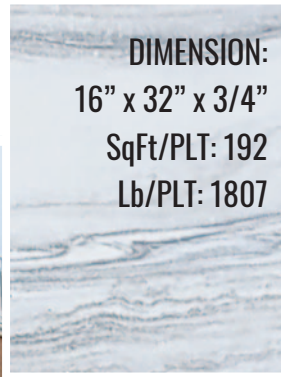
BOTTOM LEFT

2CM Sandstone Grey porcelain paver is designed based on the Natural Sandstone. It is a great alternative to natural sandstone as it will always maintain color consistency with zero maintenance. The Sandstone Grey Porcelain Paver is a great alternative to natural sandstone for pool decks, roof decks, and patios.

Dimensions: 24" x 24"

2CM PORCELAIN PAVERS

International Porcelain Company is proud to introduce the new **2CM Silver White** porcelain pavers offer a tasteful marble look. The Silver White is great for installation around pool decks and patios.





TOP CENTER

International Porcelain Company's **2CM Pietra Spacatta** porcelain pavers are stunning Pennsylvania Bluestone-look outdoor porcelain pavers anti-slip and fade-resistant. Great for pool decks, and patio applications. Our Pietra Spacatta porcelain paver offers the stunning appearance of natural stone, as lines of gold, beige, brown, and white all flow effortlessly through one another. Its appearance transcends and elevates your space, no matter where installed. Our porcelain pavers are non-slip and easy to clean, which is why they are great for pool decks, walkways, and patio applications.

Get ready to transform your outdoor spaces into a timeless masterpiece with these exquisite pavers that are as beautiful as they are durable.

Inspired by the natural beauty of Pennsylvania Bluestone, these porcelain pavers are meticulously crafted to mimic the authentic texture, color, and pattern of the original stone. With their elegant, sophisticated appearance, they will elevate the aesthetic of any outdoor area, from patios and walkways to pool decks and courtyards.

Dimensions: 16" x 16" | 16" x 32" | 32" x 32"

2CM PORCELAIN PAVERS

International Porcelain Company is proud to introduce the **2CM Snow White** porcelain pavers. They are perfect for patios, gardens, pool decks, and outdoor areas. They are a modern white and grey variant color that leaves your outdoor area looking up-to-date and gorgeous.

DIMENSION:
24" x 24" x 3/4"
SqFt/PLT: 288
Lb/PLT: 2750





LEFT PAGE

2CM Snow White porcelain paver

Dimensions: 24" x 24"

TOP CENTER

2CM Beach Beige porcelain paver is one of the most popular designs we have, with its neutral beige tones it is perfect for any pool deck or patio Porcelain Paver installation.

Dimensions: 24" x 24"

BOTTOM LEFT

2CM Da Vinci porcelain paver is a beautiful and calming marble look outdoor porcelain paver. The Da Vinci is non-slip with no maintenance required. Looks great and works well for pool decks and patio applications.

Dimensions: 16" x 32"

2CM PORCELAIN PAVERS

International Porcelain Company **2CM Calacatta** porcelain pavers is a beautiful marble look outdoor porcelain paver. It is non slip with no maintenance required, great for pool decks and patio applications.

DIMENSION:
24" x 24" x 3/4"
SqFt/PLT: 288
Lb/PLT: 2750





LEFT PAGE

2CM Calacatta porcelain paver

Dimensions: 24" x 24"

TOP CENTER

2CM Sandstone Beige porcelain paver was designed based on the Natural Sandstone.

---It is a great alternative to natural sandstone as it will always maintain color consistency with zero maintenance. This a great alternative to natural sandstone for pool decks and patios.

Dimensions: 24" x 24"

BOTTOM LEFT

2CM Quartz Griss porcelain paver was created to bring the feel and look of Quartzite Pavers.

The Quartz Griss is unlike quartz, which presents problems with color and thickness variations. International Porcelain Company's Griss Porcelain Paver, maintains color and thickness always. The standard sizing makes installation very easy.

Dimensions: 24" x 24"

2CM PORCELAIN PAVERS

NEW ADDITIONS

International Porcelain Company is proud to introduce the new **2CM French Limestone** porcelain pavers. This is a beautiful limestone look outdoor porcelain paver, non-slip with no maintenance required, great for walkways, pool decks, and patio applications.

DIMENSION:
16" x 32" x 3/4"
SqFt/PLT: 192
Lb/PLT: 1807





LEFT PAGE

2CM French Limestone porcelain paver
Dimensions: 16" x 32"

TOP CENTER

2CM Quartz Gold porcelain paver is a beautiful quartz look outdoor porcelain paver, non-slip with no maintenance required, great for walkways, pool decks, and patio applications
Dimensions: 16" x 32"

BOTTOM LEFT

2CM Quartz Bianco porcelain paver is a beautiful quartz look outdoor porcelain paver, non-slip with no maintenance required, great for walkways, pool decks, and patio applications.
Dimensions: 16" x 32"



3CM PORCELAIN PAVERS

International Porcelain Company **3CM Dark Silver Grey** porcelain paver has a beautiful marble look outdoor porcelain paver non-slip with no maintenance required, great for driveways, pool decks, and patio applications.



DIMENSION:
16" x 32" x 3/4"
SqFt/PLT: 192
Lb/PLT: 1807



LEFT PAGE

3CM Dark Silver Grey porcelain paver
Dimensions: 16" x 32"

TOP CENTER

3CM Cadore Frassino Plank porcelain pavers offers a new wooden plank finish. These durable plank pavers are perfect for patios, gardens, pool decks, driveways and outdoor areas.
Dimensions: 8" x 32"

BOTTOM LEFT

3CM Cadore Rovere Plank porcelain pavers
Dimensions: 8" x 32"

3CM PORCELAIN PAVERS

International Porcelain Company Pavers is proud to introduce the **3CM Da Vinci**, a beautiful marble look in Grey with Beige tones. This outdoor porcelain paver has a non-slip with no maintenance required. The Da Vinci looks great for driveways, pool decks, and patio applications.



DIMENSION:
16" x 32" x 3/4"
SqFt/PLT: 192
Lb/PLT: 1807



LEFT PAGE

3CM Da Vinci porcelain paver

Dimensions: 16" x 32"

TOP CENTER

3CM Ancient Grey porcelain paver are perfect for patios, gardens, pool decks, driveways and outdoor areas.

Dimensions: 24" x 24"

BOTTOM LEFT

3CM Tuscany Silver porcelain paver is a beautiful travertine look outdoor porcelain paver non-slip with no maintenance required. The Tuscany Silver looks great for driveways, pool decks, walkways, and patio applications.

Dimensions: 16" x 32"

3CM PORCELAIN PAVERS

International Porcelain Company is proud to introduce the **3 CM Silver Grey** with a beautiful marble look. This outdoor porcelain paver has a non-slip with no maintenance required. The Silver Grey looks great for driveways, pool decks, and patio applications.

DIMENSION:
16" x 32" x 3/4"
SqFt/PLT: 192
Lb/PLT: 1807





LEFT PAGE

3CM Silver porcelain paver

Dimensions: 16" x 32"

TOP CENTER

3CM Quartz Beige porcelain pavers is a beautiful marble look outdoor porcelain paver non-slip with no maintenance required. The Quartz Beige looks great for driveways, pool decks, and patio applications.

Dimensions: 16" x 32"

BOTTOM LEFT

3CM Basalt Black driveway porcelain pavers are perfect for driveways, patios, gardens, pool decks, and outdoor areas.

Dimensions: 16" x 32" | 24" x 24"

3CM PORCELAIN PAVERS

International Porcelain Company is proud to introduce **3CM Quartz Griss** Porcelain Paver is a beautiful marble look outdoor porcelain paver non-slip with no maintenance required. The Quartz Griss looks great for driveways, pool decks, and patio applications.

DIMENSION:
24" x 24" x 3/4"
SqFt/PLT: 288
Lb/PLT: 2750





LEFT PAGE

3CM Quartz Griss porcelain paver

Dimensions: 24" x 24"

TOP CENTER

3CM Pietra Di Vals porcelain pavers are perfect for patios, gardens, pool decks, driveways and outdoor areas.

Dimensions: 24" x 24"

BOTTOM LEFT

3CM Shellstone porcelain pavers offers the creamy, warm color of a 3cm Shellstone Porcelain Pavers. They are perfect for patios, pools, steps and walkways. The beautiful shellstone color is a neutral tone for a warm touch. The Shellstone outdoor porcelain paver is non slip with no maintenance required, which is why they are great for pool decks, and patio applications.

Dimensions: 24" x 24"

3CM PORCELAIN PAVERS

NEW ADDITIONS

International Porcelain Company is proud to introduce the new **3CM Bluestone Dark** Porcelain Paver is a beautiful bluestone look outdoor porcelain paver non-slip with no maintenance required, great for driveways, pool decks, and patio applications.

DIMENSION:
16" x 32" x 3/4"
SqFt/PLT: 192
Lb/PLT: 1807





LEFT PAGE

3CM Bluestone Dark porcelain paver
 Dimensions: 16" x 32"

TOP CENTER

3CM Diana Imperial porcelain paver is a beautiful outdoor porcelain paver, non-slip with no maintenance required, great for driveways, pool decks, and patio applications.
 Dimensions: 16" x 32"

LEFT CENTER

3CM French Limestone porcelain paver is a beautiful limestone look outdoor porcelain paver, non-slip with no maintenance required, great for driveways, pool decks, and patio applications.
 Dimensions: 16" x 32"

BOTTOM RIGHT

3CM Pietra Antica Porcelain Paver is a beautiful outdoor porcelain paver, non-slip with no maintenance required, great for driveways, pool decks, and patio applications.
 Dimensions: 16" x 32"

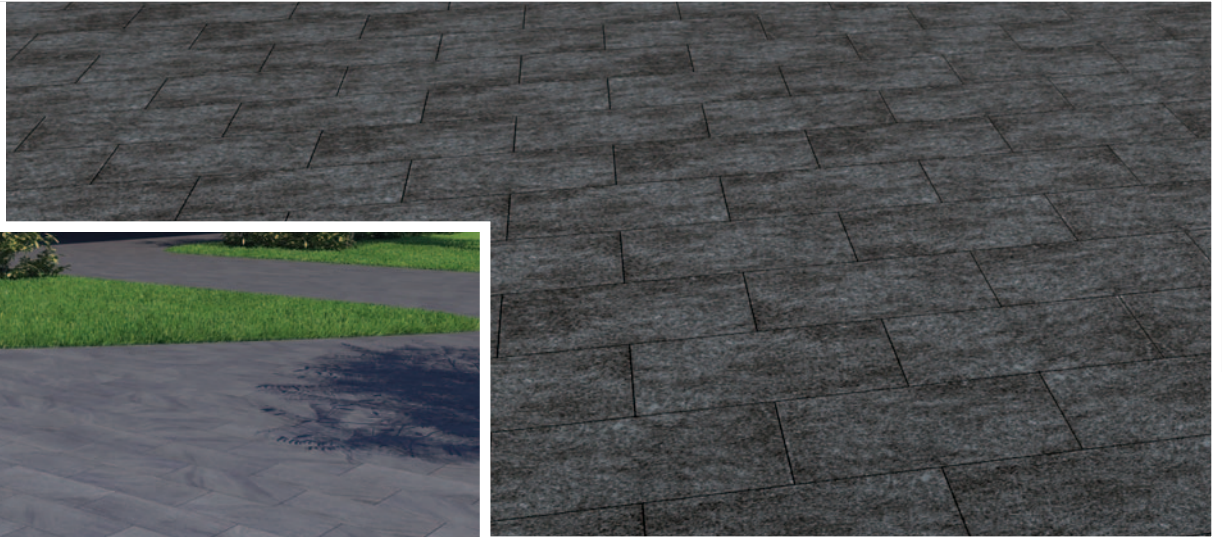


DIMENSION:
 16" x 32" x 3/4"
SqFt/PLT: 192
Lb/PLT: 1807

5CM PORCELAIN PAVERS

International Porcelain Company offers the Natura line offers porcelain pavers in original and exceptional thicknesses of 5cm (2" inches), able to respond to stresses up until now unimaginable for the ceramic surfaces. A new generation of porcelain pavers that pave the way for the use of porcelain replacing stones and other natural materials that are difficult to obtain due to the high cost and the growing scarcity which in some countries has led to an absolute extraction ban in order to protect the environment.





LEFT PAGE

5cm Porfido Red porcelain paver

Dimensions: 4" x 4" | 4" x 8" | 8" x 8" | 8" x 16"
16" x 24" | 24" x 24"



TOP CENTER

5cm Basalt porcelain paver

Dimensions: 4" x 4" | 4" x 8" | 8" x 8" | 8" x 16"
16" x 24" | 24" x 24"

LEFT COLUMN TOP

5cm Pietra Lavica Grey porcelain paver

Dimensions: 4" x 4" | 4" x 8" | 8" x 8" | 8" x 16"
16" x 24" | 24" x 24"



LEFT COLUMN MIDDLE

5cm Pietra Lavica Sand porcelain paver

Dimensions: 4" x 4" | 4" x 8" | 8" x 8" | 8" x 16"
16" x 24" | 24" x 24"

LEFT COLUMN BOTTOM

5cm Triolo Quartz porcelain paver

Dimensions: 4" x 4" | 4" x 8" | 8" x 8" | 8" x 16"
16" x 24" | 24" x 24"

PORCELAIN COBBLESTONE

Porcelain Cobblestones are new and innovative in the Hardscape industry. Due to its durability, longevity, and resemblance to natural stone, Porcelain Cobblestones are becoming more requested for homes and commercial properties alike. With a variety of color options, sizes, and functionality, Porcelain Cobblestones are a fan favorite.

Porcelain Cobblestones are perfect for patios, driveways, roads, roadways and walkways.

BOTTOM LARGE

Porcelain Cobblestone - Basalt

Dimensions: 4" x 4" | 4" x 8" | 8" x 8"

BOTTOM INSET

Porcelain Cobblestone - Grigior

Dimensions: 4" x 4" | 4" x 8" | 8" x 8"



PORCELAIN STEPPING STONE

Customize your yard with International Porcelain Company's new Zen Garden Stepping Stones. Irregular shapes and a 3D-texture allow for the stepping stones to blend effortlessly with nature. A consistent height enables quick, easy installation. Zen Garden Stepping Stones simulate the warmth and beauty of natural stones with all the benefits and zero maintenance of porcelain pavers.



TOP

Porcelain Stepping Stones - Ardesia

BOTTOM LEFT

Porcelain Stepping Stones - Barge

BOTTOM RIGHT

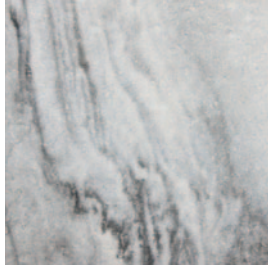
Porcelain Stepping Stones - Grigioni



PORCELAIN PAVERS PRODUCT LIST



2CM Shellstone
24" x 24"
Sample on Page 5



2CM Silver White
16" x 32" | 24" x 24"
Sample on Page 6



2CM Roma Travertine
24" x 24"
Sample on Page 7



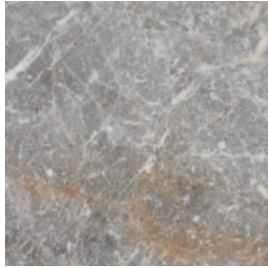
2CM Sandstone Grey
24" x 24"
Sample on Page 7



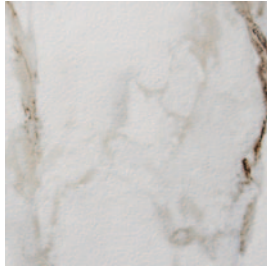
2CM Snow White
24" x 24"
Sample on Page 8



2CM Beach Beige
24" x 24"
Sample on Page 9



2CM Da Vinci
16" x 32"
Sample on Page 9



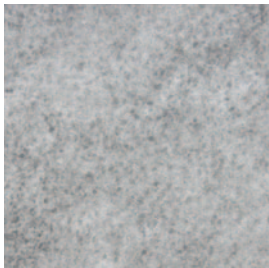
2CM Calacatta
24" x 24"
Sample on Page 10



2CM Sandstone Beige
24" x 24"
Sample on Page 11



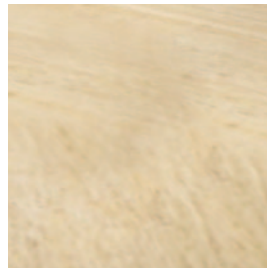
2CM Pietra Di Vals
Dimensions: 24" x 24"
Sample on Page 19



2CM Quartz Griss
24" x 24"
Sample on Page 11



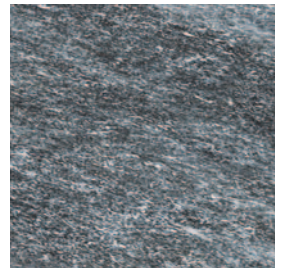
2CM French Limestone
16" x 32"
Sample on Page 12



2CM Quartz Gold
16" x 32"
Sample on Page 13



2CM Quartz Bianco
16" x 32"
Sample on Page 13



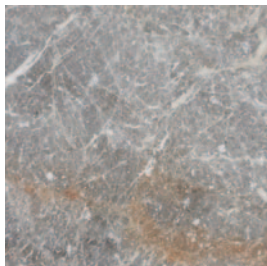
3CM Dark Silver Grey
16" x 32"
Sample on Page 14



3CM Cadore Frassino Plank
8" x 32"
Sample on Page 15



3CM Cadore Rovere Plank
8" x 32"
Sample on Page 15



3CM Da Vinci
16" x 32"
Sample on Page 16



3CM Ancient Grey
12" x 24" | 24" x 24"
Sample on Page 17



3CM Tuscany Silver
16" x 32"
Sample on Page 17

WHY ARE PORCELAIN PAVERS THE BEST CHOICE?

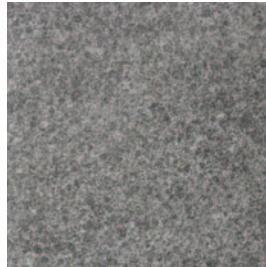
Porcelain pavers are synonymous with versatility: Lighter and more practical than cement-based concrete and natural stones, guaranteeing an excellent load-bearing capacity and resistance to breakage.



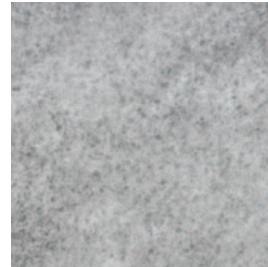
3CM Silver Grey
16" x 32"
Sample on Page 18



3CM Quartz Beige
16" x 32"
Sample on Page 19



3CM Basalt Black
16" x 32"
Sample on Page 19



3CM Quartz Griss
16" x 32"
Sample on Page 20



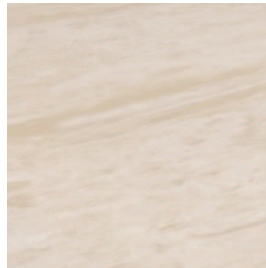
3CM Shellstone
24" x 24"
Sample on Page 21



3CM Pietra Di Vals
24" x 24"
Sample on Page 21



3CM Bluestone Dark
16" x 32"
Sample on Page 22



3CM Diana Imperial
16" x 32"
Sample on Page 23



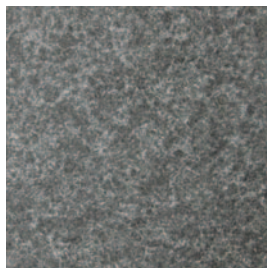
3CM French Limestone
16" x 32"
Sample on Page 23



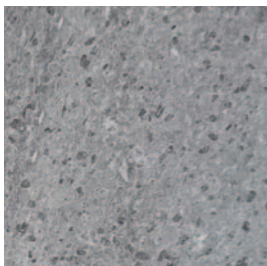
3CM Pietra Antica
16" x 32"
Sample on Page 23



5CM Porfido Red
4" x 4" | 4" x 8" | 8" x 8"
8" x 16" | 16" x 24" | 24" x 24"
Sample on Page 24



5CM Basalt
4" x 4" | 4" x 8" | 8" x 8"
8" x 16" | 16" x 24" | 24" x 24"
Sample on Page 25



5CM Pietra Lavica Grey
4" x 4" | 4" x 8" | 8" x 8"
8" x 16" | 16" x 24" | 24" x 24"
Sample on Page 25



5CM Pietra Lavica Sand
4" x 4" | 4" x 8" | 8" x 8"
8" x 16" | 16" x 24" | 24" x 24"
Sample on Page 25



5CM Triolo Quartz
4" x 4" | 4" x 8" | 8" x 8"
8" x 16" | 16" x 24" | 24" x 24"
Sample on Page 25

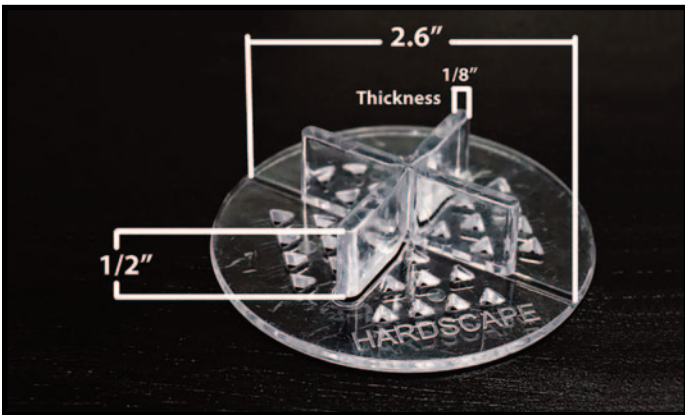


PORCELAIN PAVERS ACCESSORIES



POLYMERIC SAND

Polymeric Sand is a unique mixture of polymer binders and calibrated sand available in Beige, Slate Grey, Ivory, and Black Diamond. Once Polymeric Sand sets, it becomes very firm and locks between the porcelain tile joints while still retaining flexibility and providing a long-lasting, durable jointing material. Polymeric Sand is recommended for a variety of pedestrian uses including pool decks, patios, footpaths, etc.



2CM PORCELAIN PAVERS SPACER

International Porcelain Company Spacers work with ceramic, stone, porcelain and marble. They're perfect for evenly spacing wall and floor tile.

You can use it for both horizontal and vertical tile installations.

- Won't tip, twist, or compress.
- Precision cut for accuracy.
- For aligning marble, granite, porcelain, and large format tile.
- Provide quick, professional-looking results .
- Accurately sized for uniform spacing.
- 1 bag = 80 spacers



LATICRETE PERMACOLOR SELECT GROUT - KIT

PERMACOLOR Select is an advanced high-performance cement grout that offers the industry's first dispensable dry pigment solution. PERMACOLOR Select is designed for virtually all types of residential and commercial installations and offers optimum performance on the most demanding exterior or interior applications.

Easy to mix, grout and clean, PERMACOLOR Select is fast setting and is suitable for joints 1/16" to 1/2" (1.5mm - 12mm) wide on floors or walls.

PERMACOLOR Color Kit - Available in all 40 colors (10 x carton) plus top competitor colors!

BUDGET

Budgeting properly will set you up for success from the start of your project. See below the list of items that should be considered when building a budget for your driveway, patio, or outdoor living project:

SURPRISES

Always budget an additional 5-8% for surprises or issues that you may run into during your project. This may include broken sprinkler lines, extensions of contracts due to delays, or destruction of current landscaping. If your project ends well and you don't spend the overage on the project, splurge a little and buy something you've always wanted for your outdoor living area.

MATERIALS

Make sure that a contractor measures your new outdoor living space or driveway properly and includes an overage of 10% on materials to ensure that you will not have to have unexpected expenditures.

PERMITS

Renovating your driveway, patio, or pool deck will most likely require a permit. Ensure you speak to your contractor to see if the permit cost is included in your contract. Alternatively, contact your local municipality to see how much the permit charge is and include it in your planning.

FURNITURE

If you're planning an outdoor patio, make sure to include the cost of new furniture in your budget. Umbrellas, patio sets, and outdoor furniture can get expensive. Once you have your new outdoor living area designed with beautiful hardscapes, you will want it furnished to fully enjoy it.

LANDSCAPE LIGHTING

Landscape lighting will make your design pop. Make sure to include this into your project budget so you can make your design shine.

PREPARE FOR YOUR BUDGET TO CHANGE

No project ever stays exactly on budget. Homeowners that expect that a budget will change always feel better about the final result of their completed project.

CARE & MAINTENANCE

Your outdoor hardscape material will last with the proper care.

PORCELAIN PAVERS

When installing our porcelain pavers, you have already made a great choice with a more durable and virtually maintenance-free material. In the manufacturing process, the porcelain pavers naturally become stain-resistant, frost-resistant, and resistant to mold, moss, and mildew, which means it will never permanently stain. To remove superficial stains, use soap and water. Since Porcelain Pavers have only 0.3% absorption rate, paver sealant may not be applied.



Guarantee *Certificate*

The Porcelain Paver products manufactured by International Porcelain Company comes with a 10-year non transferable guarantee.

This guarantee is limited to aesthetic or functional defects caused during the production process.

Consequently, any wear and tear or scratches to the product are excluded from the guarantee, as are any flaws stemming from the tile-laying process. This guarantee shall only be valid if the pavers have been properly laid, used and cared for and providing that the problem has been checked and validated by our Technical Department.

Because this guarantee is associated with the intrinsic quality of the products, it is limited to the value of the materials supplied by International Porcelain Company. It means that International Porcelain Company will not cover the cost of labor or other materials used in the tile-laying process or the cost of possible damages regarding commercial, industrial, professional or residential activities of the clients or users.

The guarantee shall become valid from the day after the product is purchased by the final customer, and it must be accompanied by a copy of the Purchase order or sales invoice.

International Porcelain Company Pavers



Outdoor Areas

Pool Decks

Driveways

Patios



Dream

Create the outdoor space you've always dreamed of.
From elaborate entrances to backyard sanctuaries,
glorified driveways and more. Porcelain pavers will
give you strength, beauty and satisfaction.

 /porcelain_boss

 /internationalporcelaincompany

www.PorcelainBoss.com

Visit Our
SHOWROOM

1182 Fischer Blvd., Suite 4

Toms River, NJ 08753

Ph: (732) 503-4920

info@PorcelainBoss.com